

**21132 Barnstaple\_SK200 - 36 Boutport St Scaffold & soft strip for 2<sup>nd</sup> timber survey**

Rev A- 15 June '22

Surveyor requires assistance on site moving scaffold boards around to provide safe access during inspection.







Rev B- 19 June '22

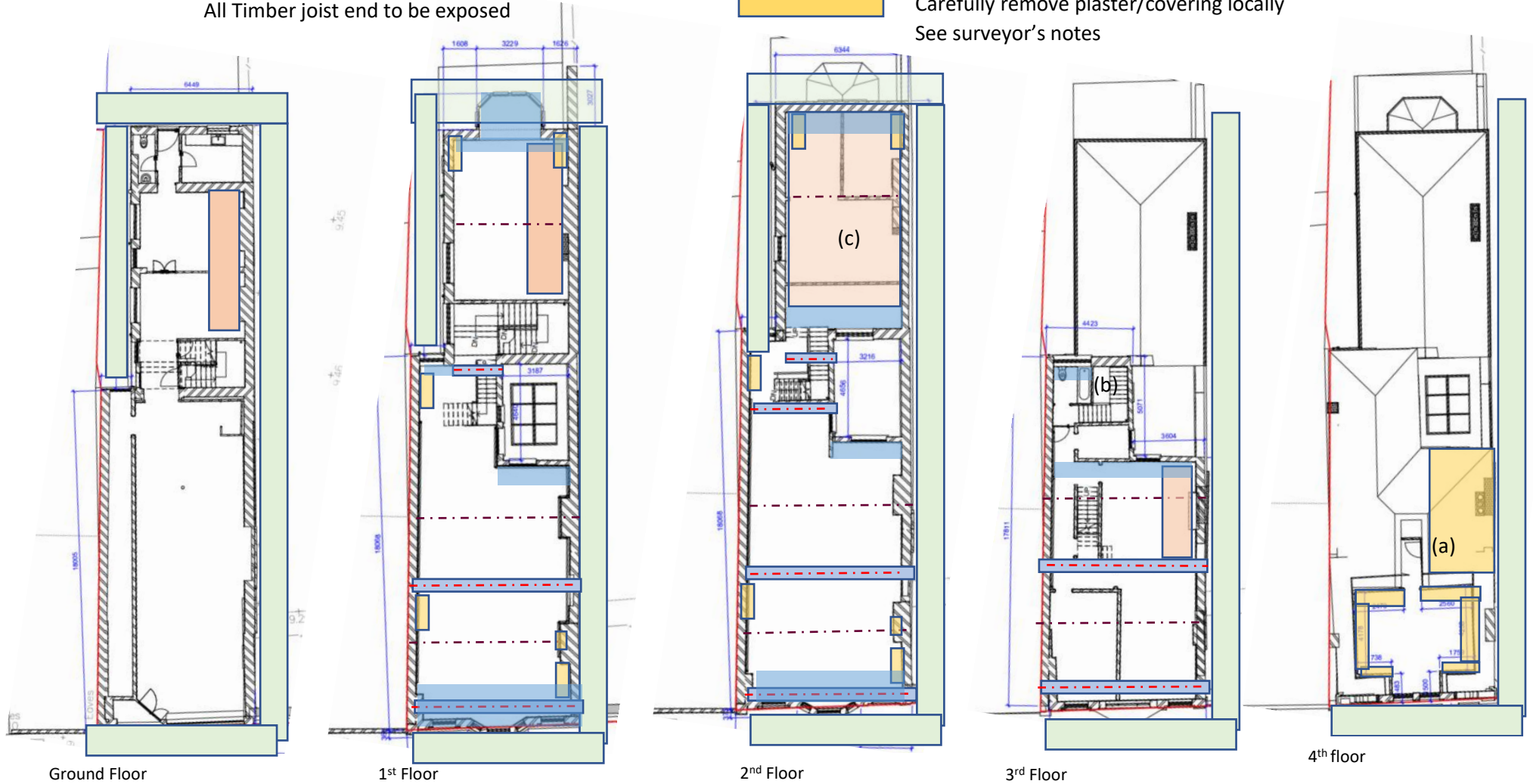
Colours changed – Beams & plaster locations added

Rev C- 20 June '22

Access required to 3<sup>rd</sup> floor pitch roof added

All Timber joist end to be exposed

-  New internal scaffold
-  Existing external scaffold
-  Timber boards lifted to expose timber beam.
-  Blue: lift floorboards
-  Steel beam
-  Carefully remove plaster/covering locally  
See surveyor's notes



**NOTE: All floor boards set to one side locally.  
All materials removed to be bagged and retained on site**

(c) scaffold to access roof above

Access to the pitched roof area on the 3<sup>rd</sup> from the door within the stairs leading to the 4<sup>th</sup> floor (a) Remove bathroom fittings and floorboards (b)

Remove strips only from top & bottom to expose plates and rafter feet to allow a person to inspect the void in between the rafters, approx. 600 mm plaster. Ceilings to be removed.